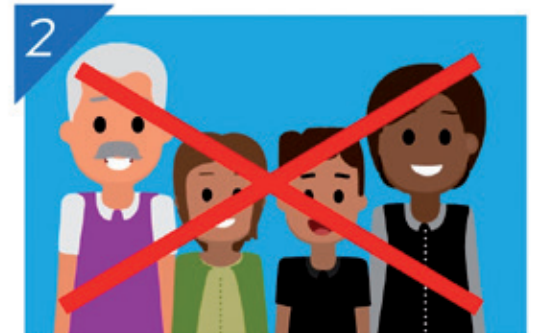


RADICALIZATION

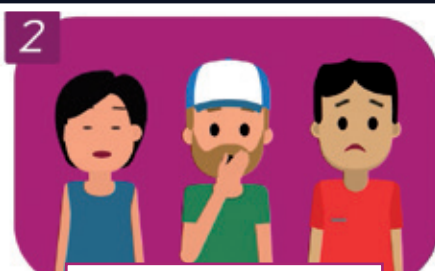


IF YOU NOTICE THAT YOUR FRIEND:

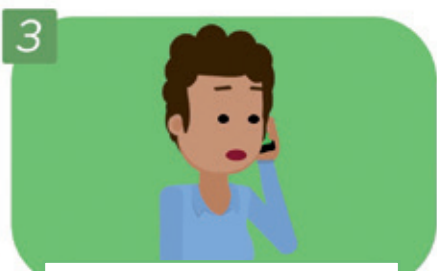
- ISOLATES HER/HIMSELF**
- LOOSES CONTACT WITH HIS FAMILY**
- START TO TALK ABOUT CONSPIRACY THEORIES**
- START TO BE RADICALIZED**



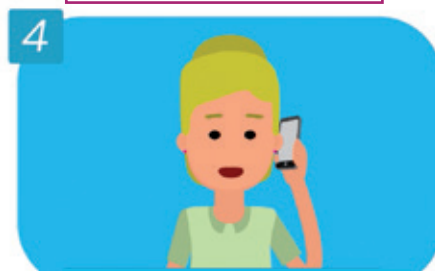
Keep in touch with him/her



Talk to his/her friends



Inform his/her parents



Contact the prevention officer

**KEEP IN TOUCH WITH HIM/HER,
TALK TO HIS/HER FRIENDS OR
FAMILY**

**CONTACT THE LOCAL
NUMBER FOR PREVENTION OF
RADICALIZATION**

#TOGETHERWEARESAFER